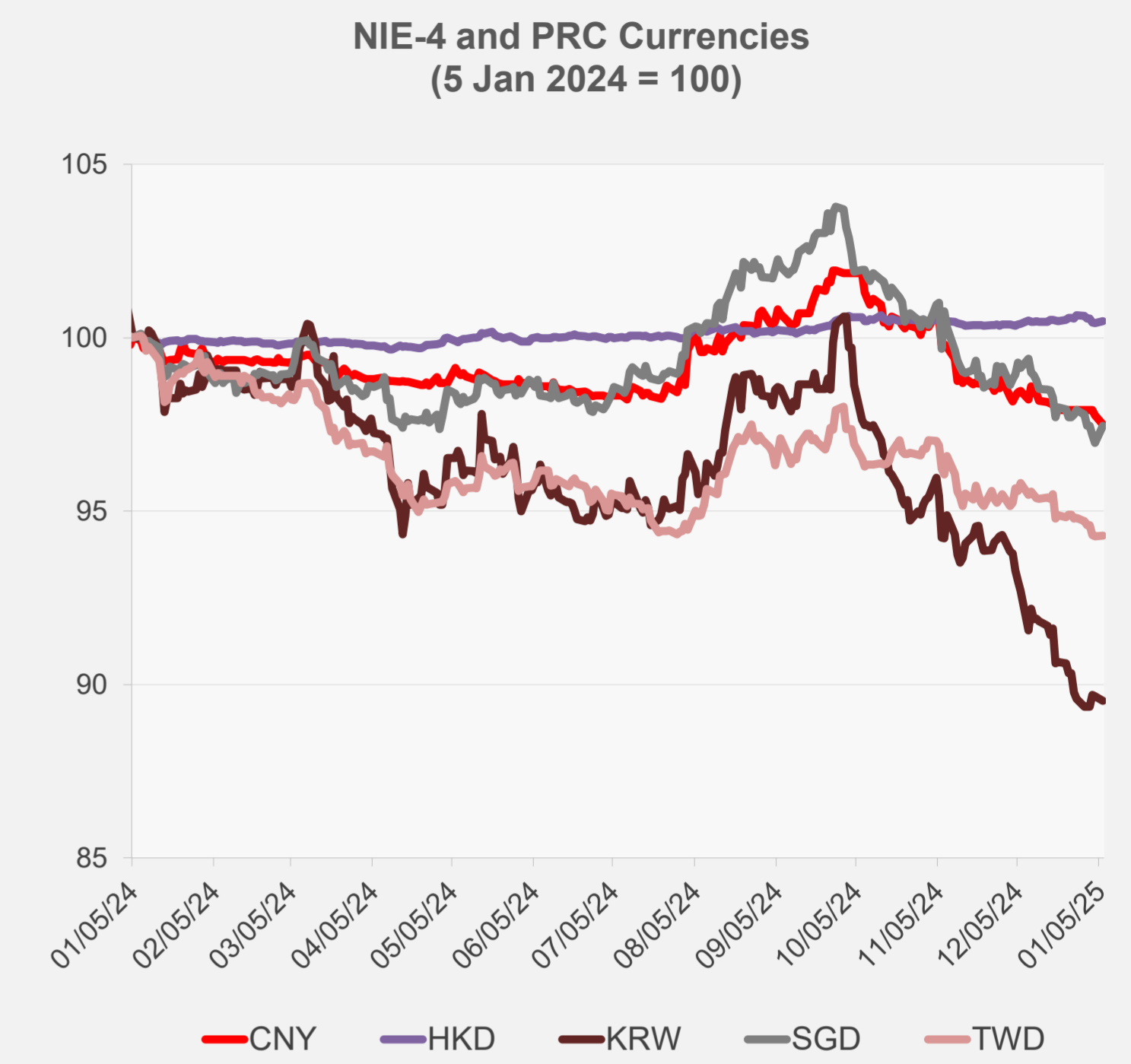
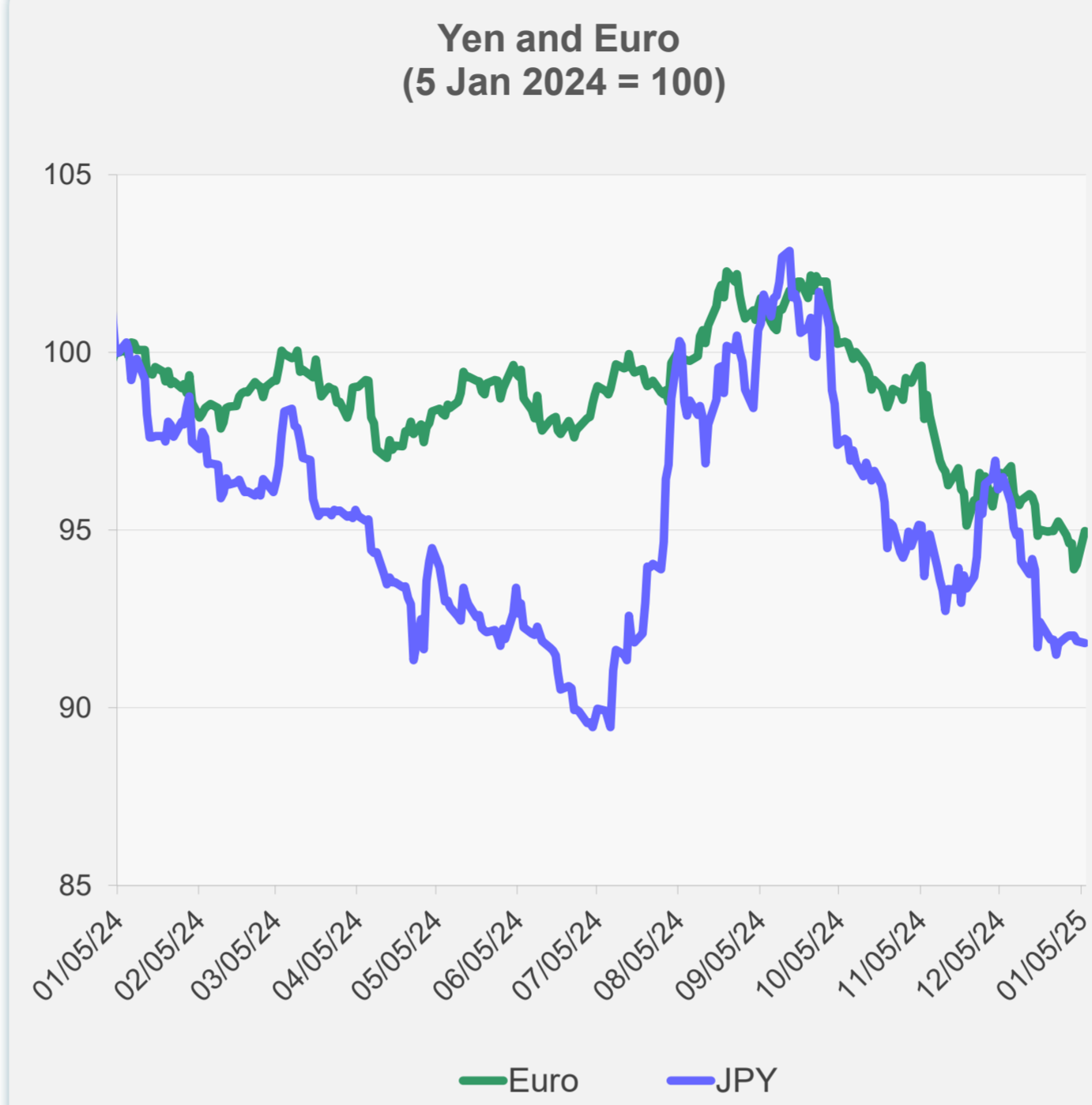
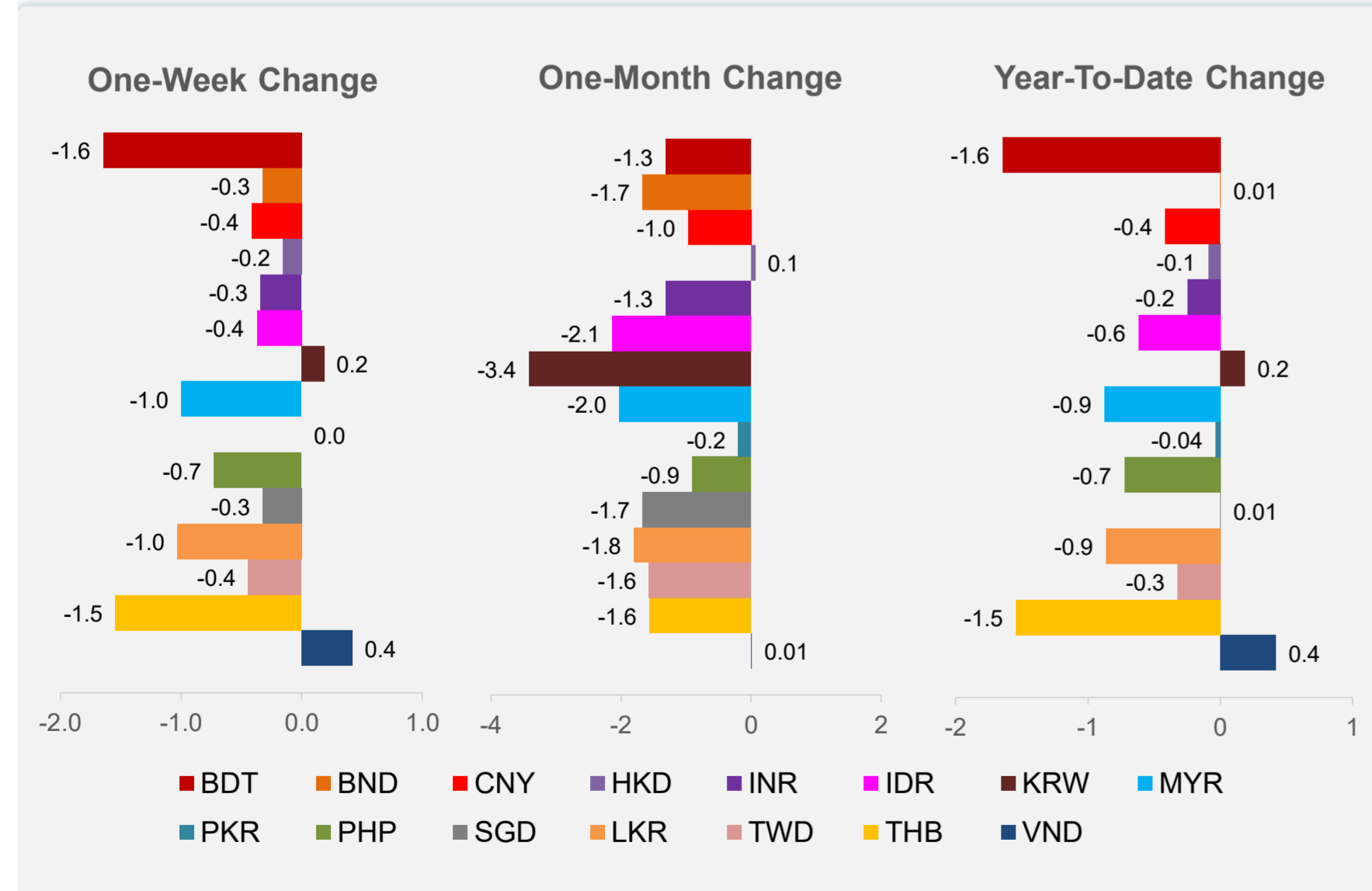
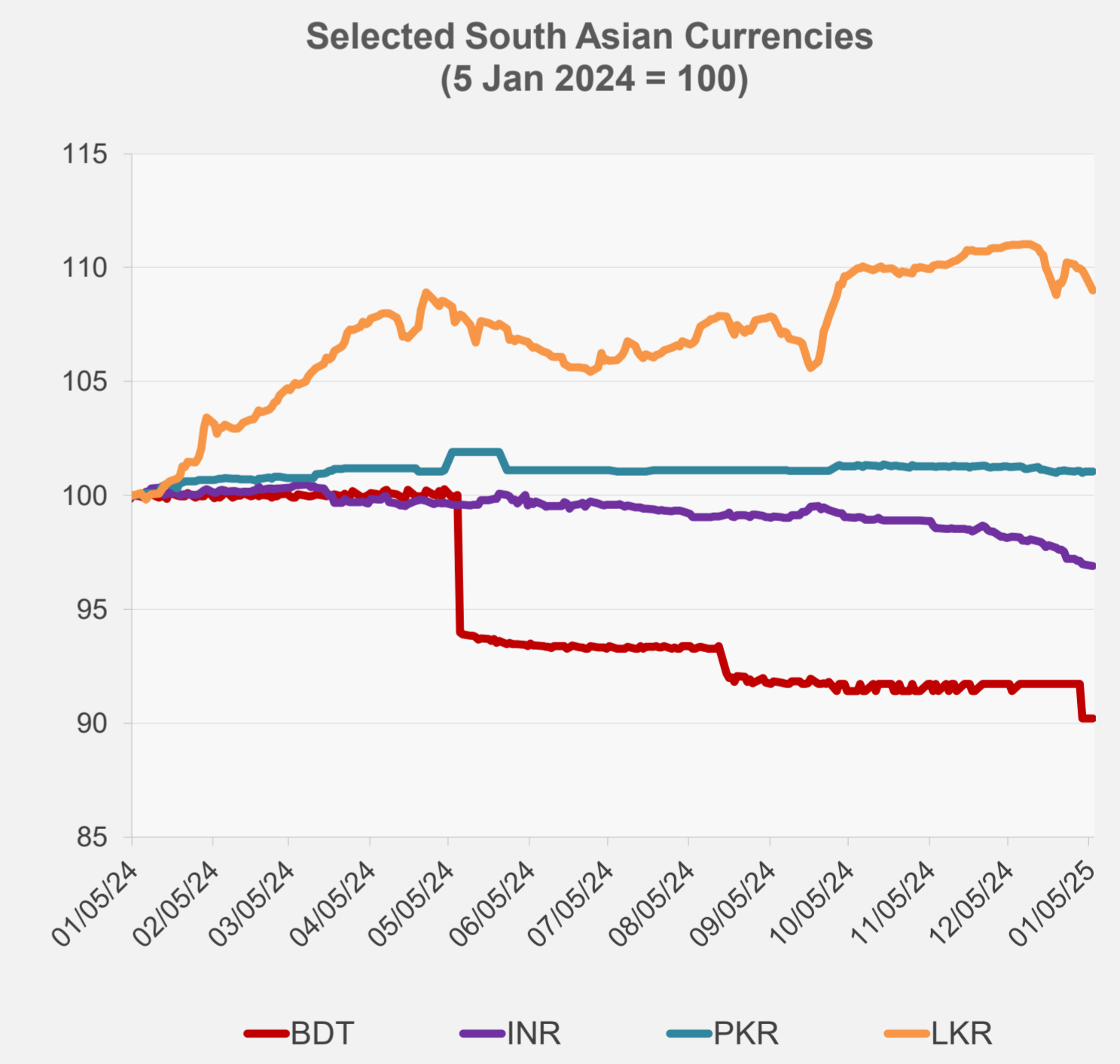
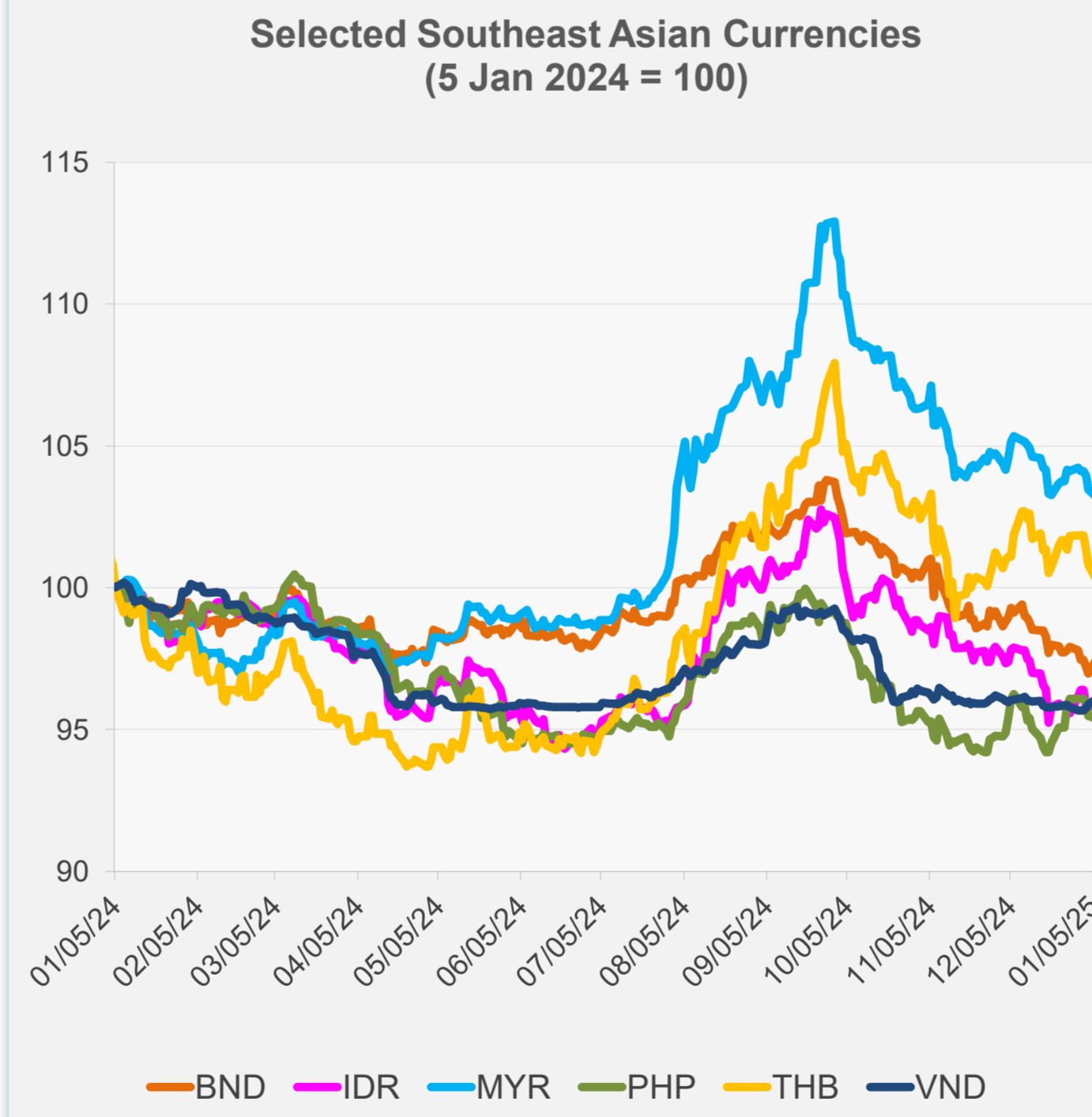


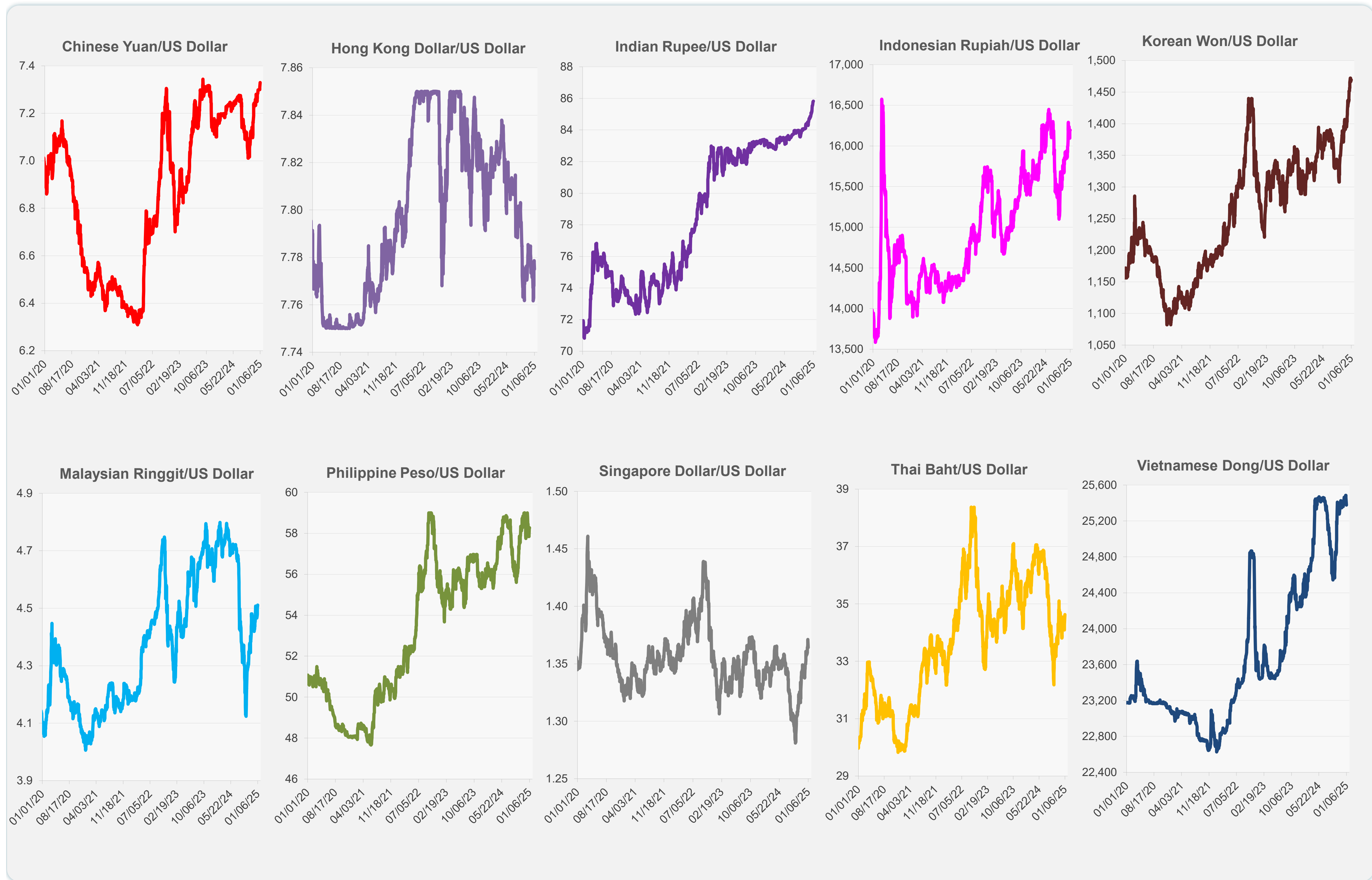
	Latest Closing	% change from Previous Day	% change from 01-Jan-25
Euro	0.96	1.02	0.37
Japanese yen (JPY)	157.51	-0.07	-0.22
Bangladeshi taka (BDT)	121.50	0.00	-1.65
Brunei dollar (BND)	1.36	0.52	0.01
Chinese yuan (CNY)	7.33	-0.27	-0.41
Hong Kong dollar (HKD)	7.78	0.05	-0.09
Indian rupee (INR)	85.83	-0.05	-0.25
Indonesian rupiah (IDR)	16,195.00	-0.03	-0.62
Korean won (KRW)	1,469.40	-0.15	0.19
Malaysian ringgit (MYR)	4.51	-0.24	-0.88
Pakistan rupee (PKR)	278.48	0.01	-0.04
Philippine peso (PHP)	58.27	-0.12	-0.73
Singapore dollar (SGD)	1.36	0.52	0.01
Sri Lanka rupee (LKR)	295.55	-0.61	-0.86
Taipei,China NT dollar (TWD)	32.89	0.03	-0.32
Thai baht (THB)	34.63	-0.53	-1.54
Vietnamese dong (VND)	25,378.00	0.19	0.42



NIE = Newly Industrialized Economies

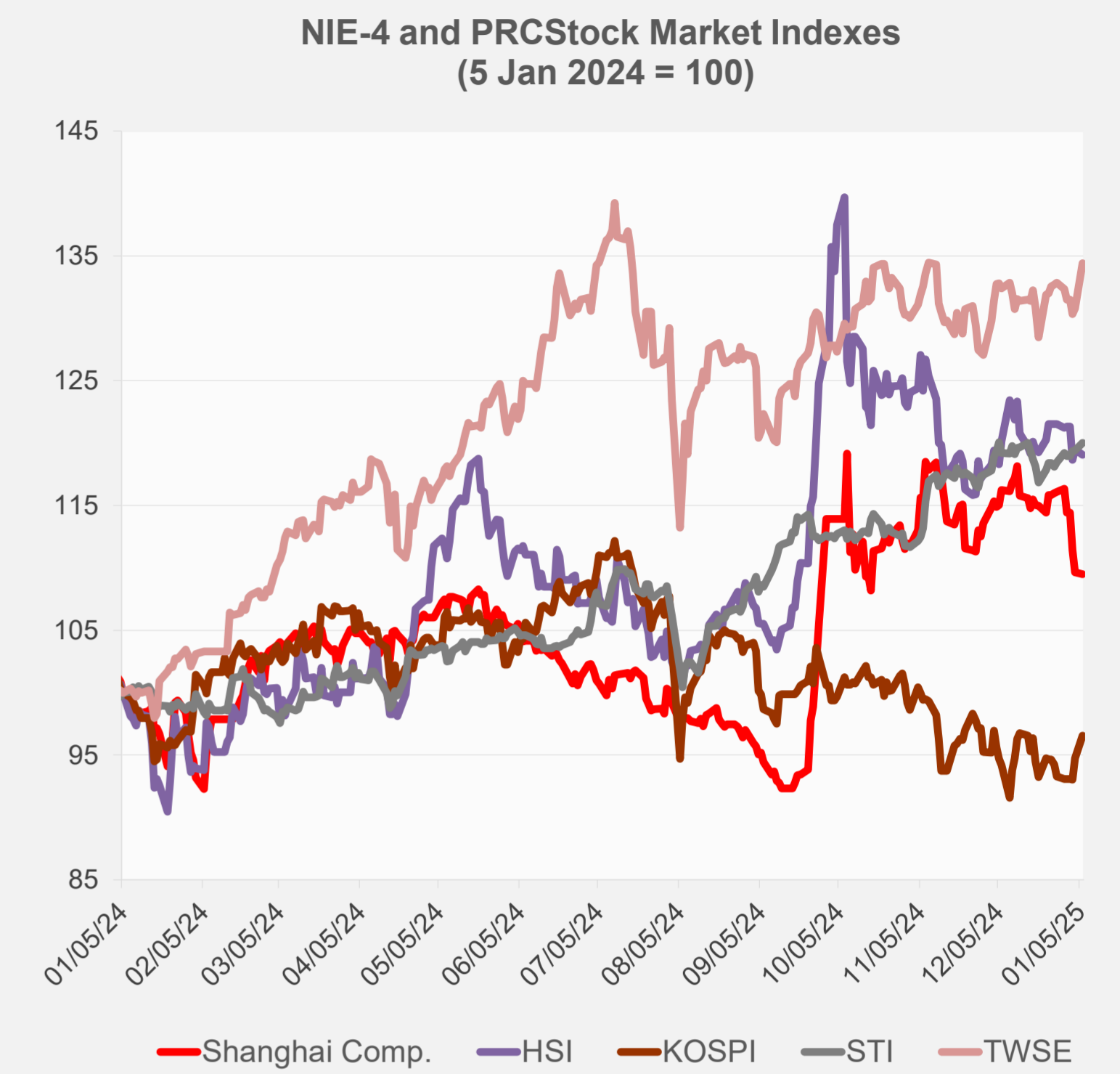
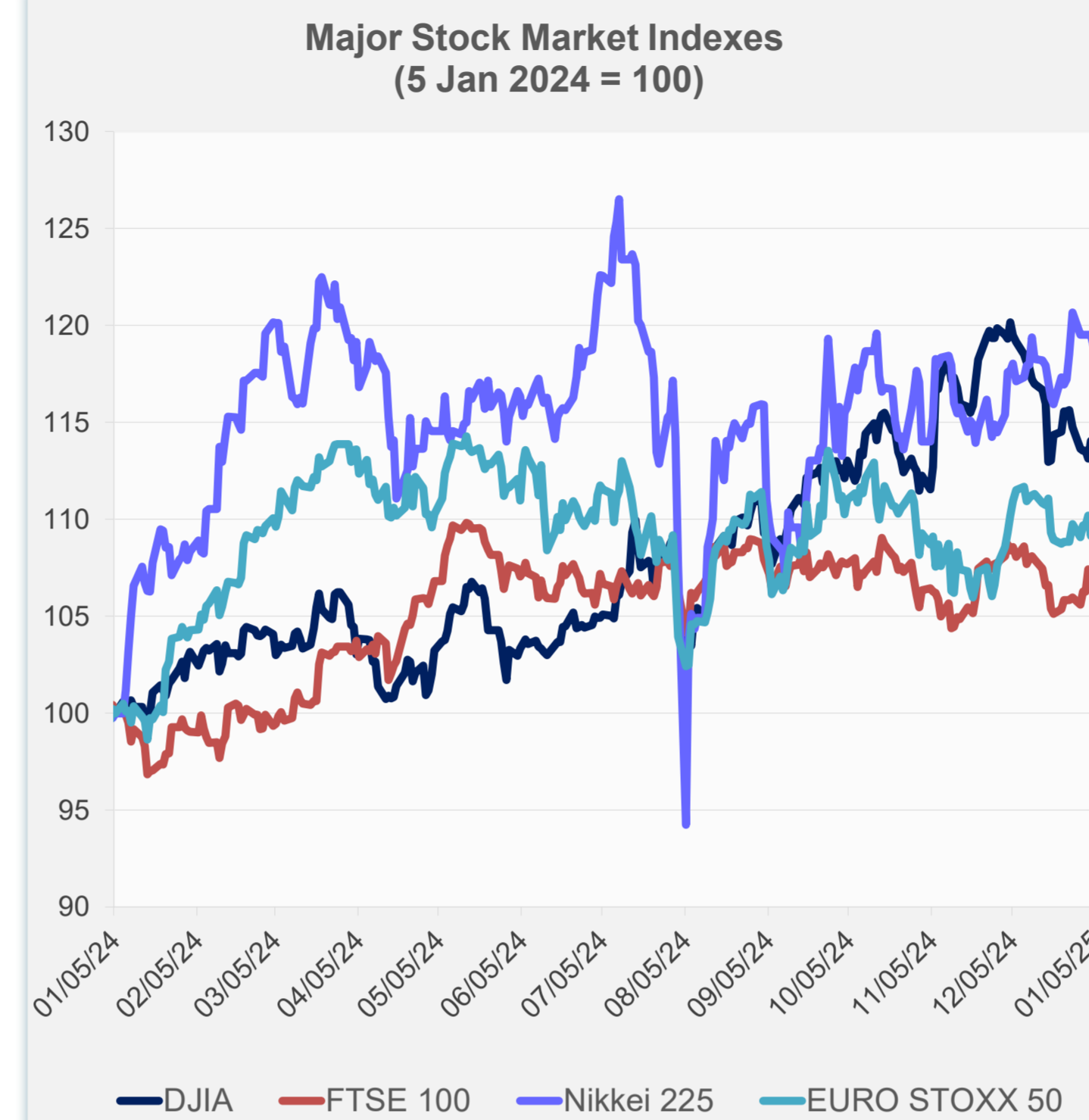


Note: Negative/Decreasing values indicate depreciation of local currency, and positive/increasing values indicate appreciation.  
Source: ADB calculations using data from Haver Analytics.

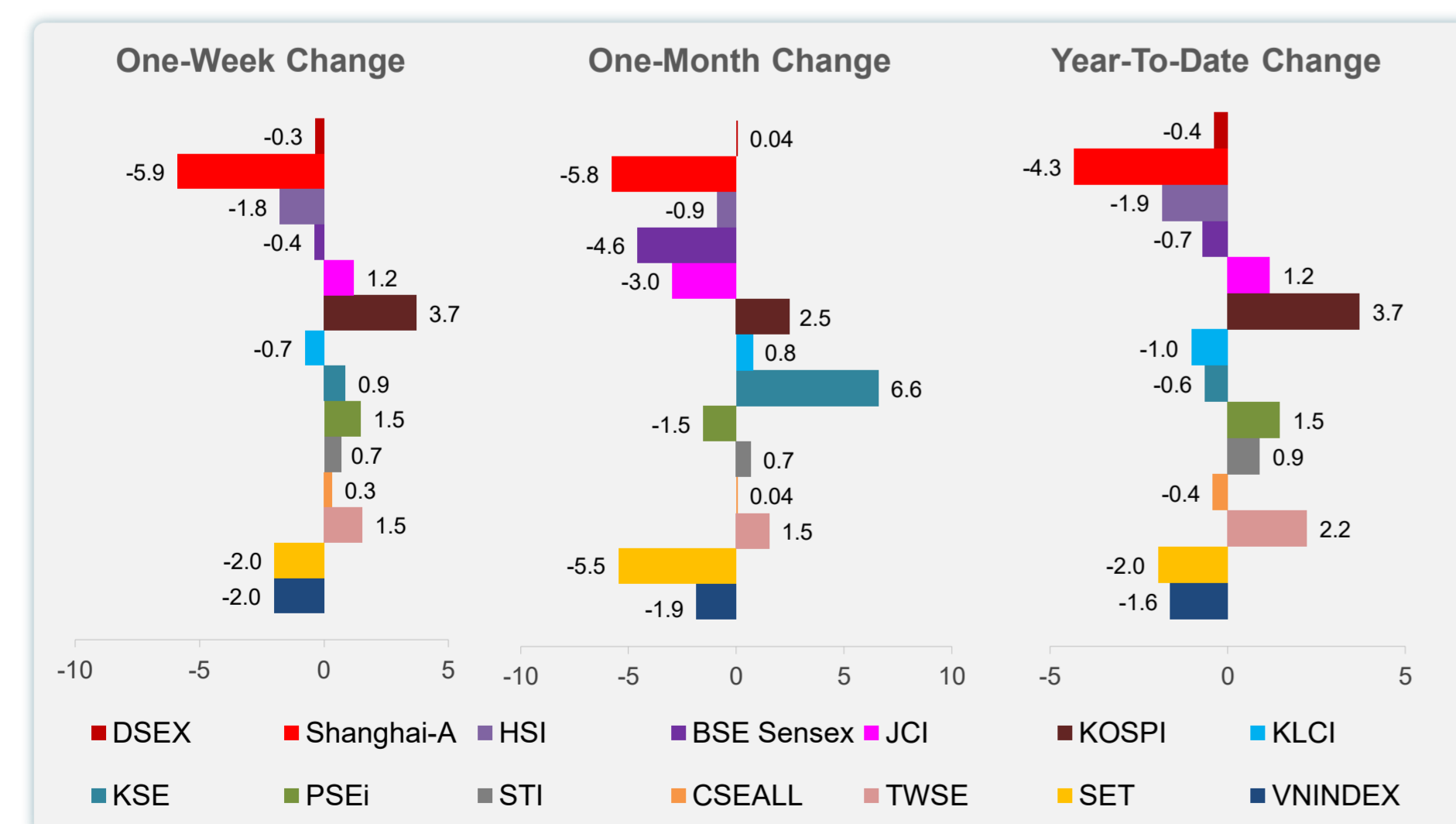
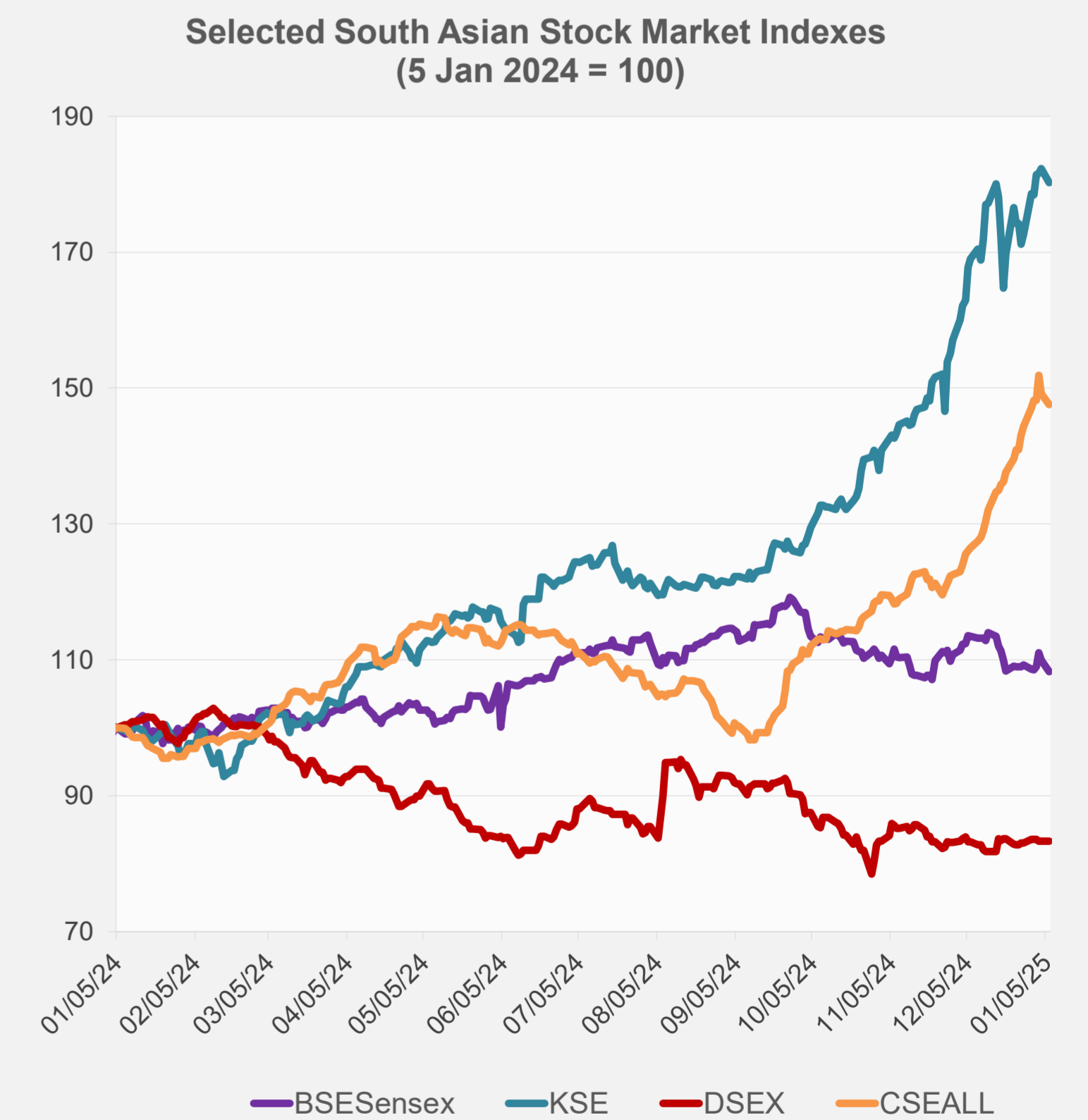
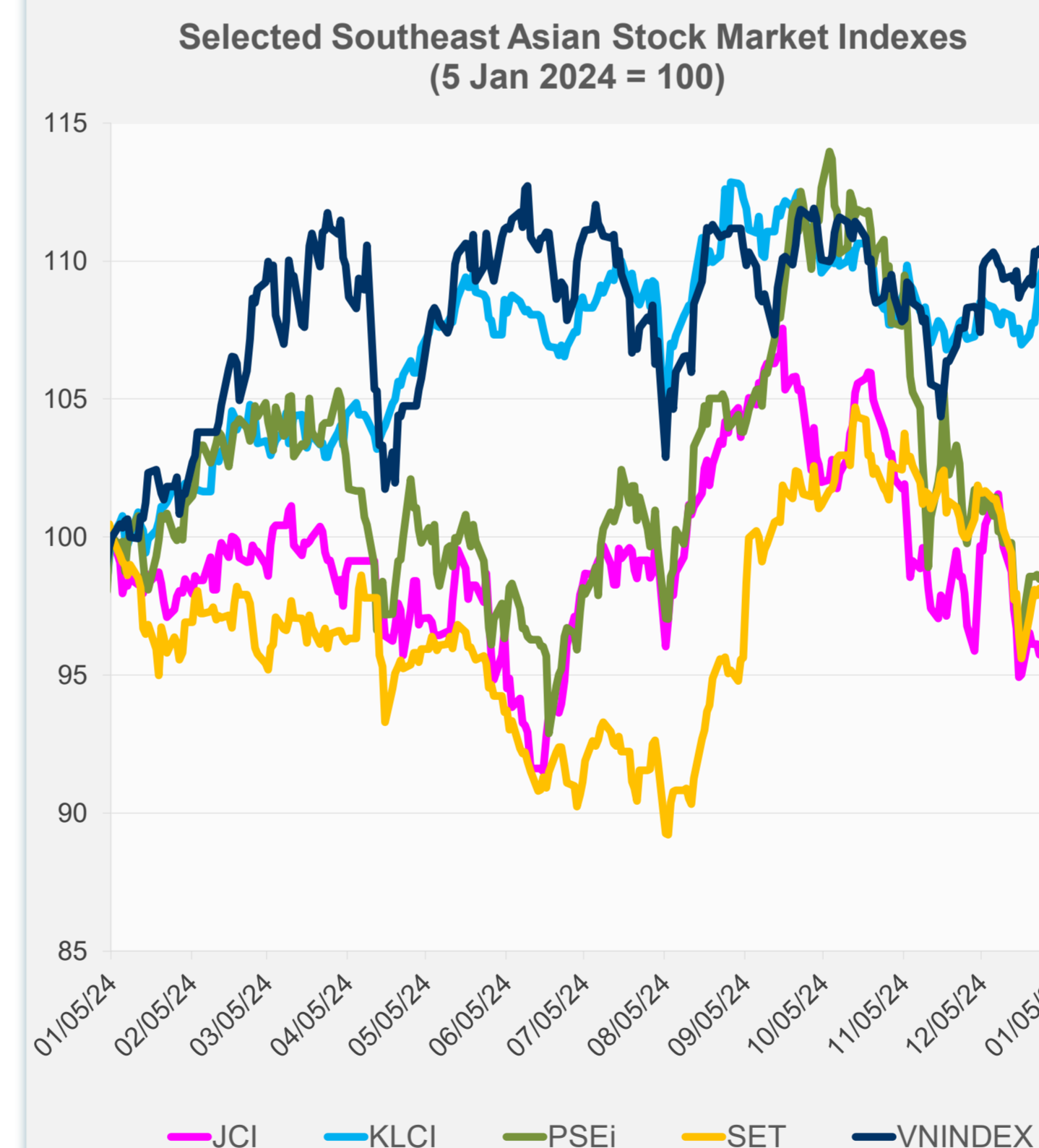


Source: Haver Analytics.

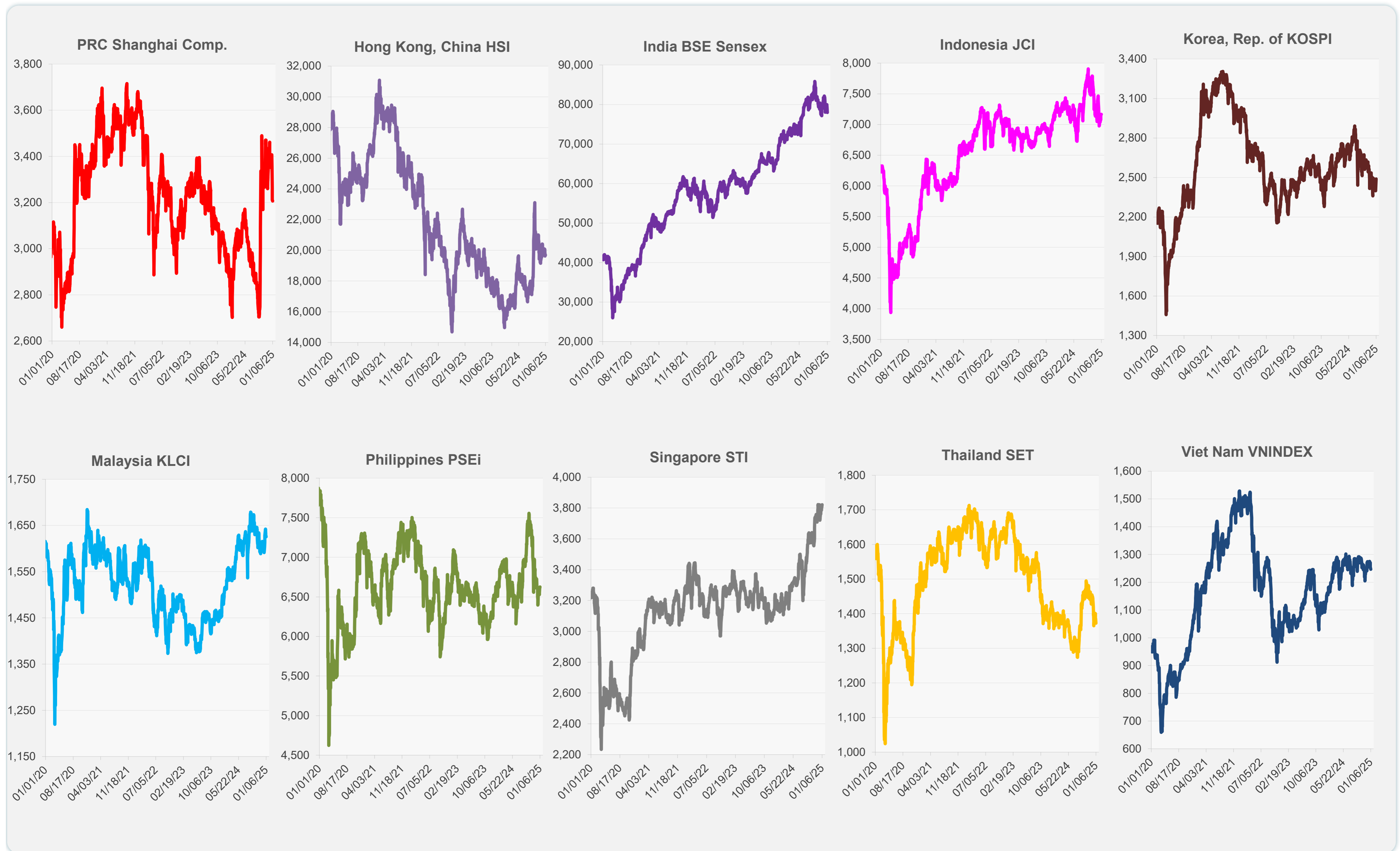
	Latest Closing	% change from Previous Day	% change from 01-Jan-25
US Dow Jones Ind Avg	42,706.56	-0.06	0.38
US NASDAQ	19,864.98	1.24	2.87
US S&P 500	5,975.38	0.55	1.59
UK FTSE 100	8,249.66	0.31	0.94
EURO STOXX 50	4,986.64	2.36	1.85
Japan NIKKEI 225	39,307.05	-1.47	-1.47
Bangladesh DSEX	5,198.84	-0.01	-0.37
PRC Shanghai Comp.	3,206.92	-0.14	-4.32
Hong Kong, China HSI	19,688.29	-0.36	-1.85
India BSE Sensex	77,964.99	-1.59	-0.69
Indonesia JCI	7,164.43	0.00	1.19
Korea, Rep. of KOSPI	2,488.64	1.91	3.72
Malaysia KLCI	1,625.47	-0.24	-1.03
Pakistan KSE 100	116,255.12	-1.13	-0.64
Philippines PSEi	6,625.17	0.32	1.48
Singapore STI	3,821.84	0.53	0.90
Sri Lanka CSEALL	15,878.60	-1.06	-0.41
Taipei, China TWSE	23,547.71	2.79	2.23
Thailand SET	1,372.65	-0.87	-1.97
Viet Nam VNINDEX	1,246.35	-0.66	-1.61



NIE = Newly Industrialized Economies



Sources: ADB calculations using data from CEIC Data Company and Haver Analytics.



Sources: CEIC Data Company and Haver Analytics.

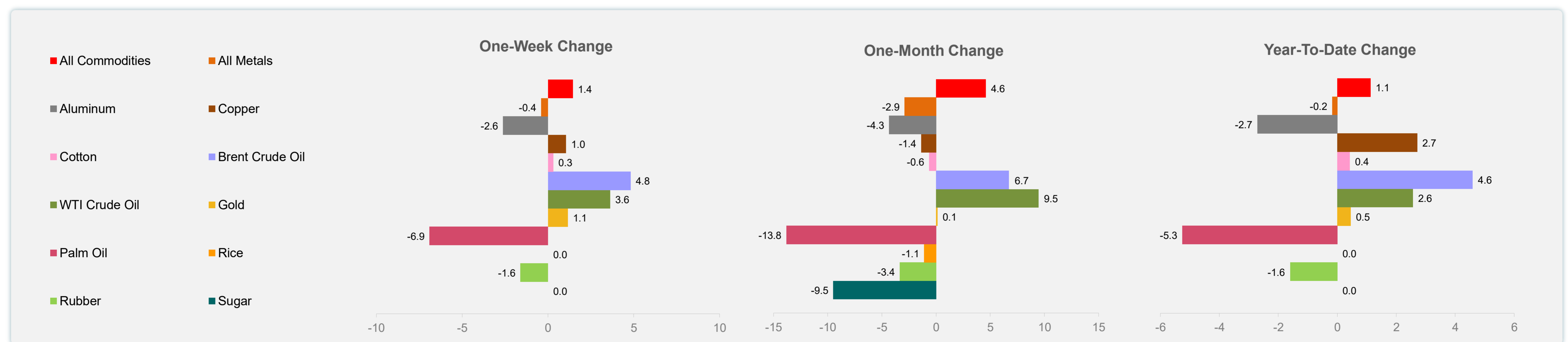
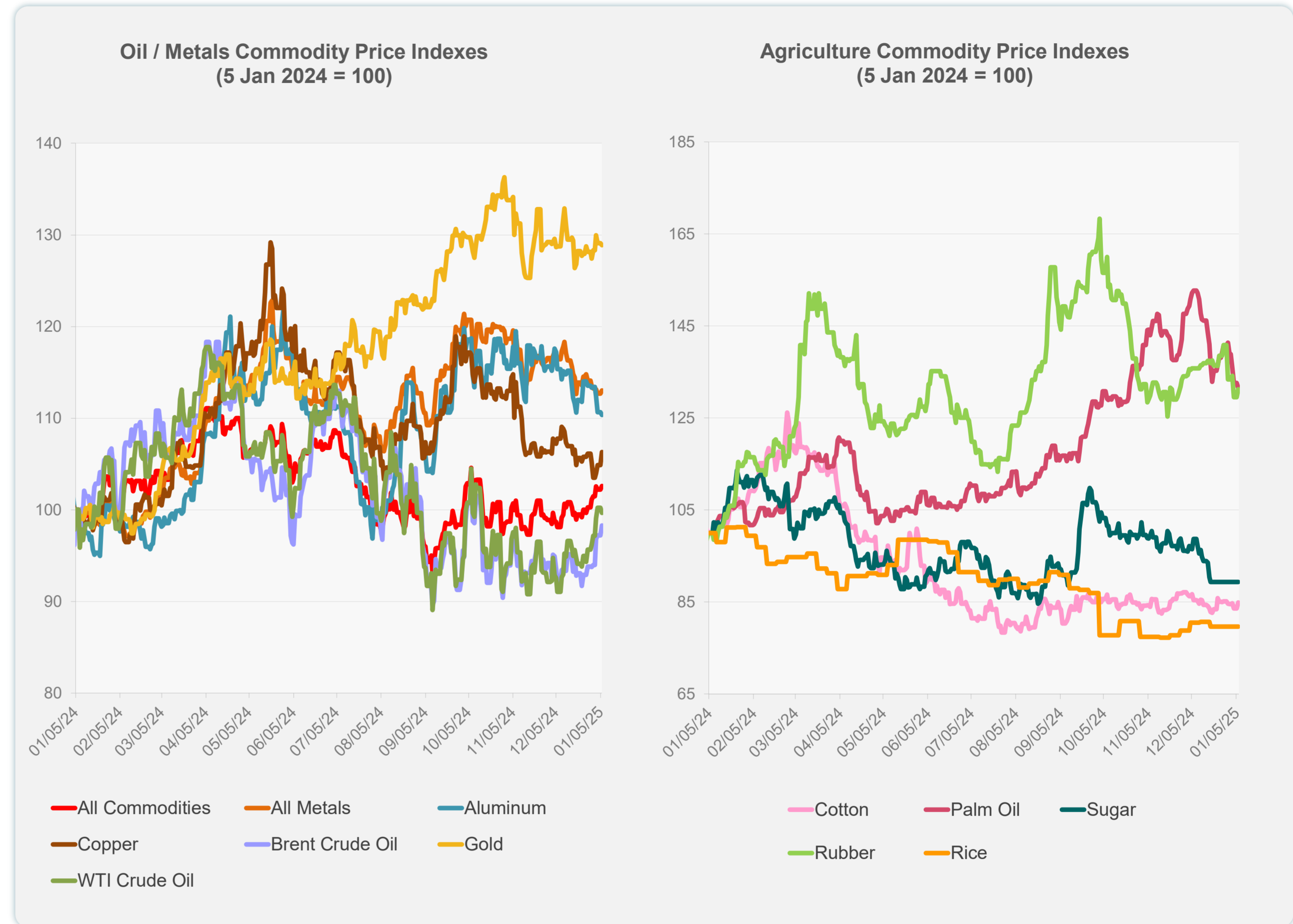
Daily Market Watch  
**COMMODITY PRICES**

7 January 2025, 9:00 AM Manila

	Unit	Latest Closing	% change from Previous Day	% change from 01-Jan-25
S&P All Commodities	US\$	555.82	0.39	1.12
S&P All Metals	US\$	306.85	0.33	-0.17
Aluminum	US\$/metric ton	2,458.27	-0.28	-2.71
Copper	US\$/metric ton	8,887.10	1.36	2.71
Cotton	US cents/lb	66.18	1.57	0.42
Brent Crude Oil	US\$/barrel	77.51	1.12	4.59
WTI Crude Oil	US\$/barrel	73.56	-0.54	2.57
Gold	US\$/troy oz	2,636.47	-0.14	0.46
Palm Oil	US\$/metric tonne	1,042.30	-0.76	-5.26
Rice <sup>1</sup>	US\$/metric ton	537.00	0.00	0.00
Rubber <sup>2</sup>	US\$/kg	233.00	1.30	-1.60
Sugar	US cents/lb	18.59	0.00	0.00

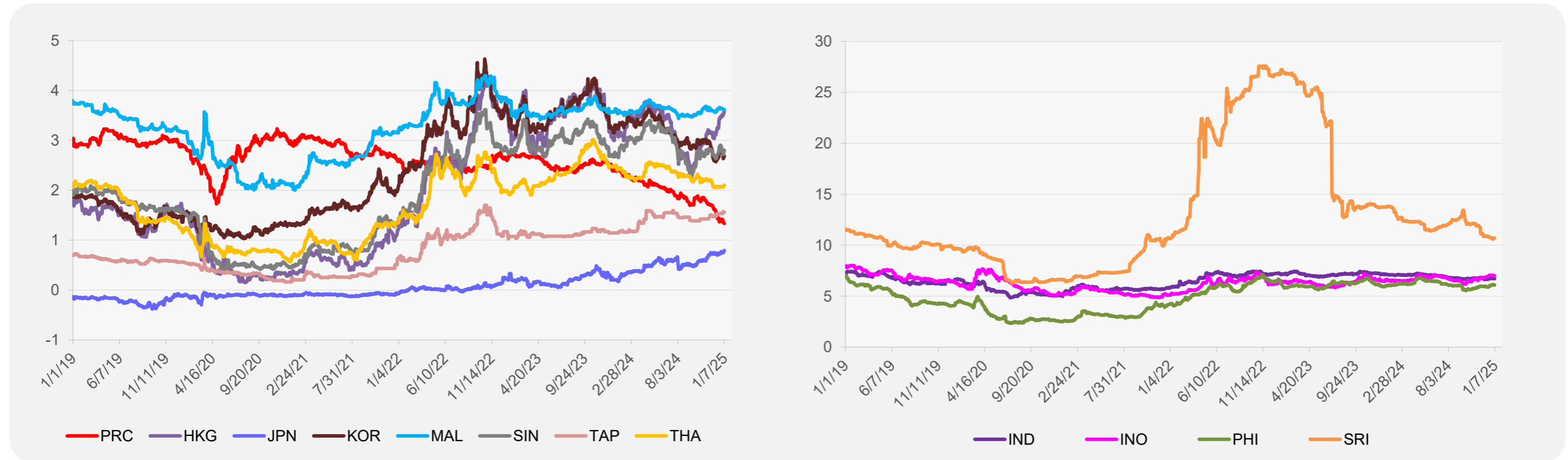
<sup>1</sup> Latest closing price from 18 December 2024.

<sup>2</sup> Singapore Exchange, Ribbed Smoked Sheet Rubber.

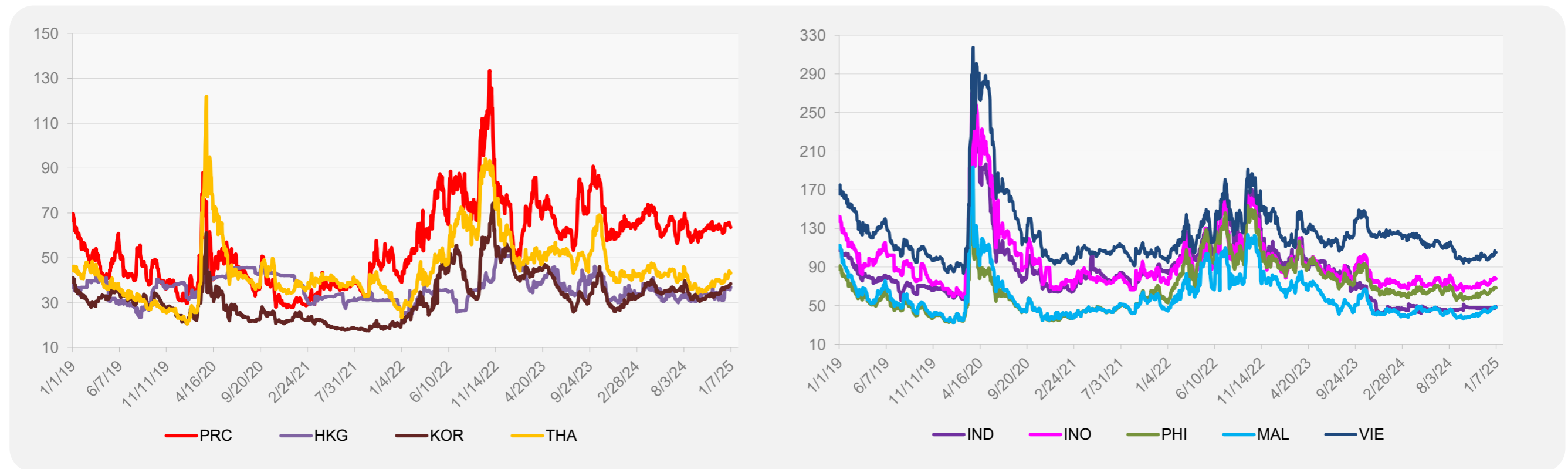


Source: ADB calculations using data from Bloomberg.

### 5-YEAR LOCAL CURRENCY GOVERNMENT BOND YIELDS (%)



### 5-YEAR CREDIT DEFAULT SWAP<sup>1</sup>



<sup>1</sup> In USD and based on sovereign bonds.  
Source: ADB calculations using data from Bloomberg.